



# Using Joomla CMS in Education

Jim Johnson

Director of Instructional & Information Technology

Bayh College of Education

Indiana State University



# Requirements for Joomla

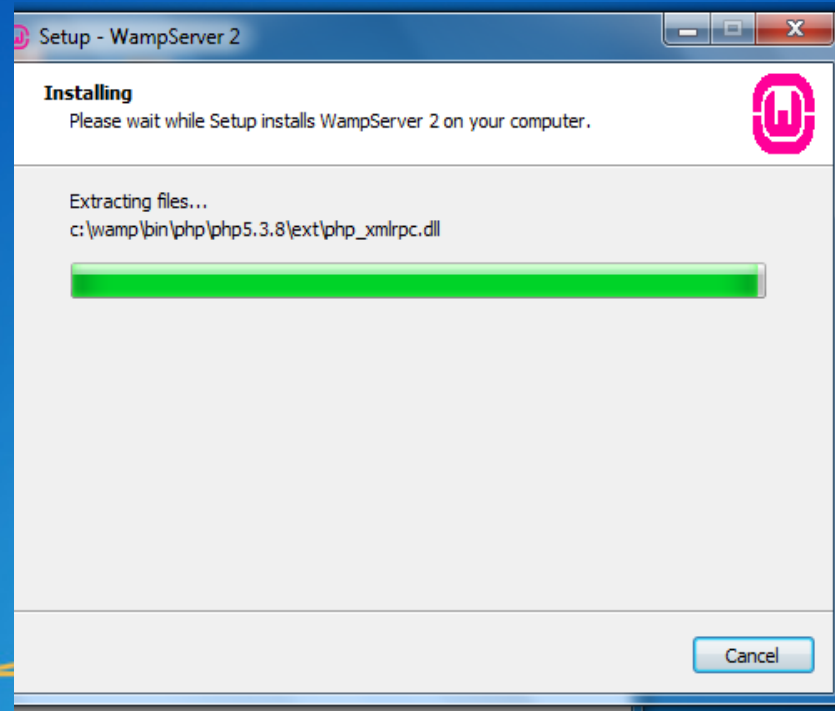
- Joomla Software (Open Source)
- PHP 5.x
- MySQL
- Server Software – Windows IIS or Linux – Apache, etc.

# Joomla Install

- Install the WAMP Software to your computer
- Create Joomla database in PHPMyAdmin
- Unzip the Joomla archive file into your WWW directory under c:\wamp
- Open Web Browser and type localhost -> ENTER
- Walk through the Joomla installer

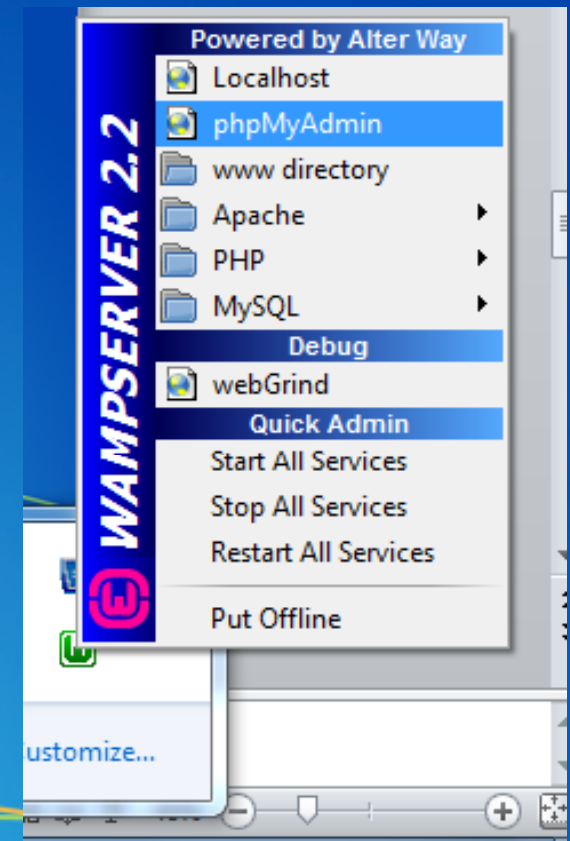
# WAMP Setup

Run the WAMP Install and then Put it Online in the System Tray



# PHPMyAdmin Database Setup

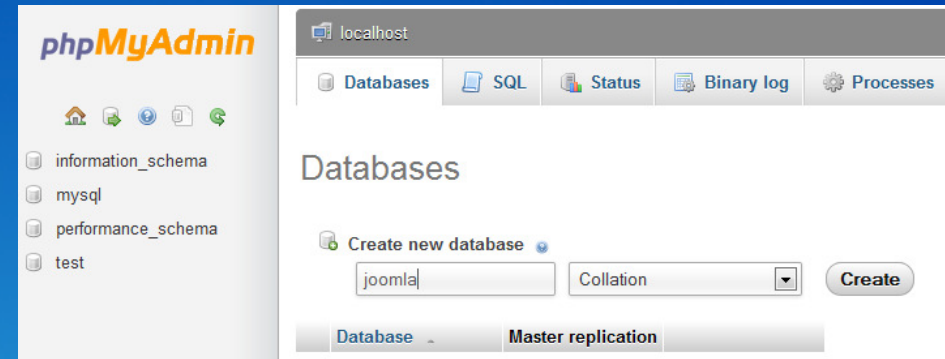
- Run the PHPMyAdmin Tool by clicking on the WAMP icon In the system tray and then click phpMyAdmin





# PHPMyAdmin Database Setup

- Once in phpMyAdmin click on Databases at the top
- Type in Joomla in the Database Name Box and then click Create



# Joomla Installation

- Unzip the Joomla zip file to C:\wamp\www and overwrite any files in the directory
- Open a web browser and type localhost in the location or URL box
- The Joomla Installation setup should appear
- Walk through the steps, mostly clicking NEXT.

# Database Setup

### Basic Settings

**Database Type \***  
MySQLi ▼ *This is probably "MySQLi"*

**Host Name \***  
localhost *This is usually "localhost"*

**Username \***  
root *Either something as "root" or a username given by the host*

**Password**  
 *For site security using a password for the mysql account is mandatory*

**Database Name \***  
joomla *Some hosts allow only a certain DB name per site. Use table prefix in this case.*

**Table Prefix \***  
novk6\_ *Choose a table prefix or use the **randomly generated**. Ideally, three or four characters and an underscore.*

**Old Database Process \***  
 Backup *Any existing backup tables from former Joomla! installations will be replaced.*  
 Remove



# Main Configuration

## Steps

- 1: Language
- 2: Pre-Installation check
- 3: License
- 4: Database
- 5: FTP Configuration
- 6: Configuration
- 7: Finish



## Main Configuration

Previous Next

### Site Name

Enter the name of your Joomla! site.  
Optional: You can also enter Meta Description and Meta keywords for your site.

#### Basic Settings

Site Name \*

▶ [Advanced Settings - Optional](#)

### Confirm the Admin email and Password.

Enter your email address. This will be the email address of the Web site Super Administrator.  
Enter a new password and then confirm it in the appropriate fields. You may change the default username **admin**. These will be the Username and password that you will use to login to the Administrator Control Panel at the end of the installation.  
If you are migrating, you can ignore this section. Your current settings will be automatically migrated.

Your Email \*

Admin Username \*

Admin Password \*

Confirm Admin Password \*

### Load sample data

**Important!** It is strongly recommended that new Joomla! users install the default sample data. To do this click on the button *before* moving to the next stage.

**1. Sample data:** Before leaving the installation, you can populate the site database with data. There are two ways to do this:

**1a. Default sample data** can be inserted. To do this, make sure the Default English (GB) Sample Data is displayed in the dropdown and click the Install Sample Data button.

**1b. Custom sample data** can be inserted. To do this, choose an available sample data in the dropdown and click the Install Sample Data button.

**2. Clean Installation:** If you wish to perform a clean installation, enter the site name, admin email and choose a password. Then proceed to the final step by clicking *Next*.

Sample Data set

Sample Data Installed Successfully.

*Installing sample data is strongly recommended for beginners. This will install sample content that is included in the Joomla! installation package.*

Joomla! © is free software released under the GNU General Public License.

# Joomla on the Inside

- Joomla's framework is composed of:
  - Templates – Look and layout of site
  - Components – major software that runs programs
  - Modules – small command pieces that support a component and is position based in the template
  - Plugins – calls code pieces inside articles to invoke a component function

# Let's Play!

- Now we can run our Joomla Admin Backend and begin installing template, components, etc.
- Each piece of software is installed as the .zip and .tar archive file and never uncompressed. Joomla automatically uncompresses and installs the software.

# Joomla Examples

- Some Joomla sites I have created recently:
- [www.IndianaDropoutPrevention.org](http://www.IndianaDropoutPrevention.org)
- [www.johnsontech.net](http://www.johnsontech.net)
- [www.Indianaeerc.org](http://www.Indianaeerc.org)
- [www.indianaieprc.org](http://www.indianaieprc.org)
- [www.tecscu.org](http://www.tecscu.org)

# Thank You & My Contact

Jim Johnson

Director of Instructional & Information Technology

Bayh College of Education

Indiana State University

Email: [jim.johnson@indstate.edu](mailto:jim.johnson@indstate.edu)

Phone: 812-237-2921

